



IMPLEMENTATION

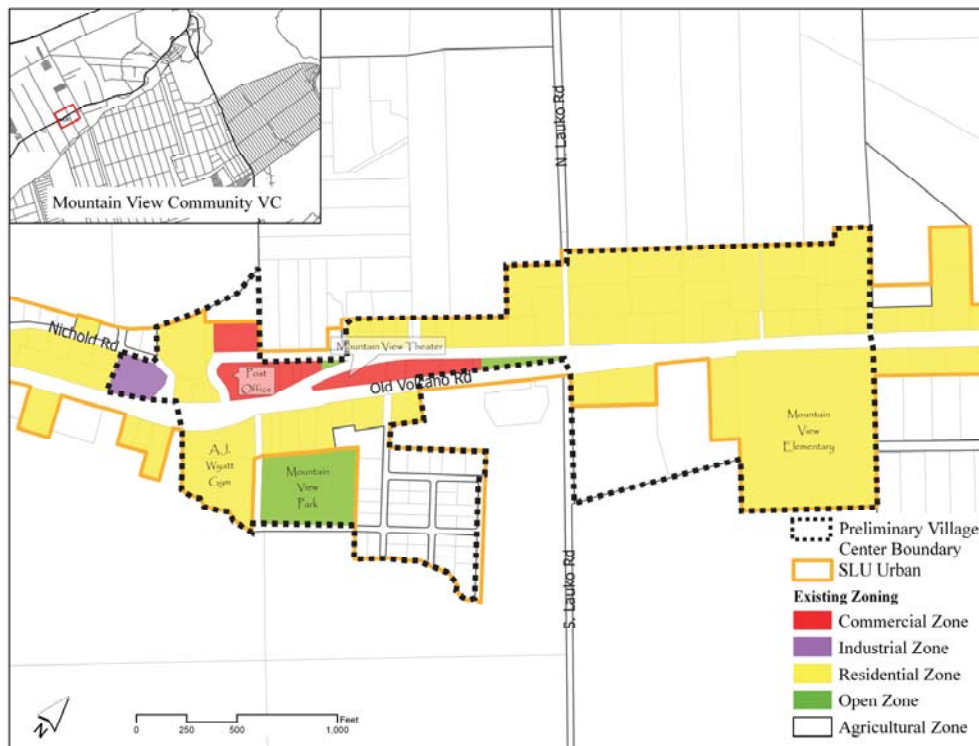
Mountain View Community Village Center

Mountain View already has a commercial-zoned area of more than 3 acres, so its village center is focused on this existing core. The area shown for the village center in the map below is approximately 85 acres and encompasses the existing elementary school, community park, Historical Mountain View Theater, A.J. Wyatt Gym and some relatively small residential lots, as well as the commercial core.

Highway 11 runs through the village center, providing access from the east and west. Lauko Road runs perpendicular to Highway 11, with the intersection near the middle of the village center. Measures to make crossing Highway 11 safer in this area should be considered, such as a bypass route or signal-controlled crosswalk.

Some have proposed the relocation of Mountain View Elementary School so that the facility can be converted into a senior community center. Ideally, the new school location would be closer to the community park, gym, and small-lot residential area. Having the school closer to the gym and park, would make the community more walkable, with more convenient and safer access for frequent users.

Figure 5-5: Mountain View Community Village Center



Kurtistown Community Village Center

The Kurtistown Community Village Center, which is aligned along Highway 11, encompasses approximately 35 acres. Approximately 15 acres or 44% of the area is already