



# HICOM

## The Puna CDP requires

**4**  
Changes to  
County Laws  
or Regs

**4**  
New County  
Commissions/D  
epartments

**16**  
Changes to  
State Laws  
or Regs

**8**  
Studies  
Federal/State/Co  
unty  
& Consultants



Comm. No. 1300.9  
Ref. To: Presented PC  
Ref. Date JUL 1 2008



# HICCA

State  
Action by  
Legislature  
Governor

- 2.3.3.a Cesspools
- 2.3.3.b Small footprint septic
- 2.3.3.e Contained systems
- 3.1.3.b Create rural town/village standards (Amend to Ch. 205)
- 3.2.3.e Change law so Counties retain tax foreclosed property
- 3.2.3.g Change GE Tax to 0.5% for farmer's markets
- 3.3.3.d Change Contractor Statutes: allow owner/builder electrical and plumbing
- 3.3.3.j Increase local control of schools in Puna
- 4.5.f State tax credits for planting easement of Rt. 137

Legislature, Governor, County Council, Mayor

3.1.3.b Allow County to size ownership of delinquent tax lots

3.2.3.d Increase conveyance tax or income tax rates for Puna property sales

SLSB

2.4.3.c Mandatory historical & biological surveys



# HICEL



State  
Action by  
Legislature  
& Governor

PLUS

County  
Action by  
Council  
& Mayor

Action by  
SLSB

• 3.1.3.b Allow County to size ownership of delinquent tax lots

• 3.2.3.d Increase conveyance tax or income tax rates for Puna property sales

2.4.3.c Mandatory historical & biological surveys - Shoreline Cert. applications

Legislature, Governor, County Council, Mayor

3.1.3.b Allow County to size ownership of delinquent tax lots

3.2.3.d Increase conveyance tax or income tax rates for Puna property sales

2.1.2.d Create Kanaka Building Code Write, Pass & Enforce Code

2.1.3.b Create Biosphere Reserve Buffer Zone BRBZ Amend Zoning Code, Council, Mayor, PD

2.1.3.d Change grading permit requirements Amend Zoning Code, Council, Mayor, PD

2.2.3.a Amend General Plan for BRBZ EIS, PD, Council, Mayor 2.2.3.b Amend Zoning code, Grubbing, grading permits PW, PD, Council, Mayor

2.2.3.e Change RPT code/Zoning Code Council, Mayor, Finance, PD

2.3.3.c Watershed Management Plan/Flooding Army Corps, FEMA, PW, PD

2.3.3.e Change SMA regulations PD, PW, Council, Mayor 2.4.3.c Mandatory historical & biological surveys SMA Permits

2.4.3.f Develop special zoning regulations for Kapoho PW, PD, Council, Mayor

3.1.2.f Limit dwelling sizes on Ag lots PD, County Council, Mayor 3.1.2.j&k County wide rezoning PW, PD, Council, Mayor 3.1.3.a Legislation to transfer development rights PD, County Council, Mayor

3.1.3.b Create "floating zoning" PD, County Council, Mayor 3.1.3.e Provide loan guarantees or grants to community associations Corp Council, County Council, Mayor 3.1.3.f Amend zoning code to limit allowable building footprints PD, County Council, Mayor

3.1.3.g Require County agencies to establish Level of Service standards Corp Council, County Council, Mayor 3.1.3.k Amend zoning subdivision codes to increase notice on permits PD, County Council, Mayor

3.2.3.a Prohibit variances that allow water catchment subdivisions PD, County Council, Mayor 3.2.3.b Downzone all Puna District AG land PD, County Council, Mayor

3.2.3.c Amend General Plan to restrict Urban Expansion EIS, PD, Council, Mayor 3.2.3.h Develop AG ECO-Tourism Policy with new zoning PD, PW, Council, Mayor 3.2.3.i Develop business incubator districts & provide assistance PD, PW, Council, Mayor

3.2.3.p Create Real Property Tax exemption for farmers County Council, Mayor 3-3.3.d Change Building code to allow owner builder to do electrical and plumbing PW, PD, Council, Mayor

3.3.3.i Change Building Code to allow occupancy before final approval PW, PD, Council, Mayor 3.6.2.c Reduce property tax on self-powered homes & businesses Council, Mayor, Finance

3.6.3.d Incorporate energy-efficient features into low cost construction using subsidies PW, Council, Mayor, Finance



# HICEN



**County  
Action by  
Council  
Mayor  
& Depts.**

- 3.1.3.e Provide loan guarantees or grants to community associations
- 3.1.3.f Amend zoning code to limit allowable building footprints
- 3.1.3.g Require County agencies to establish Level of Service standards
- 3.1.3.k Amend zoning subdivision codes to increase notice on permits
- 3.2.3.a Prohibit variances that allow water catchment subdivisions
- 3.2.3.b Downzone all Puna District AG land
- 3.2.3.c Amend General Plan to restrict Urban Expansion
- 3.2.3.h Develop AG ECO-Tourism Policy with new zoning
- 3.2.3.i Develop business incubator districts & provide assistance
- 3.2.3.p Create Real Property Tax exemption for farmers
- 3-3.3.d Change Building code: allow owner/builder electrical & plumbing
- 3.3.3.i Change Building Code: allow occupancy before final approval
- 3.6.2.c Reduce property tax on self-powered homes & businesses
- 3.6.3.d Subsidies for energy-efficiency in low cost construction

- 3.1.3.e Provide loan guarantees or grants to community associations
- 3.1.3.f Amend zoning code to limit allowable building footprints
- 3.1.3.g Require County agencies to establish Level of Service standards
- 3.1.3.k Amend zoning subdivision codes to increase notice on permits
- 3.2.3.a Prohibit variances that allow water catchment subdivisions
- 3.2.3.b Downzone all Puna District AG land
- 3.2.3.c Amend General Plan to restrict Urban Expansion
- 3.2.3.h Develop AG ECO-Tourism Policy with new zoning
- 3.2.3.i Develop business incubator districts & provide assistance
- 3.2.3.p Create Real Property Tax exemption for farmers
- 3-3.3.d Change Building code to allow owner builder to do electrical and plumbing
- 3.3.3.i Change Building Code to allow occupancy before final approval
- 3.6.2.c Reduce property tax on self-powered homes & businesses
- 3.6.3.d Incorporate energy-efficient features into low cost construction using subsidies



# HICEL



**County  
Action by  
Council  
Mayor  
& Depts.**

- 2.1.2.d Create Kanaka Building Code
- 2.1.3.b Create Biosphere Reserve Buffer Zone BRBZ
- 2.1.3.d Change grading permit requirements
- 2.2.3 a Amend General Plan for BRBZ
- 2.2.3.b Amend Zoning code, Grubbing, grading permits
- 2.2.3.c Change RPT code/Zoning Code
- 2.3.3.c Watershed Management Plan/Flooding
- 2.3.3.e Change SMA regulations
- 2.4.3.c Mandatory historical & biological surveys
- 2.4.3.f Develop special zoning regulations for Kapoho
- 3.1.2.f Limit dwelling sizes on Ag lots
- 3.1.2.j&k County wide rezoning
- 3.1.3.a Legislation to transfer development rights
- 3.1.3.b Create "floating zoning"



# HIC



## Require Charter Amendments?

- 2.1.3 Establish County Historic Preservation Commission
- 2.2.2 a Establish BRBZ Advisory Commission
- 5 County shall create community based body to advocate for...implementation
- 5.1.1 Create 9-member advisory committee for BRBZ

2.1.3 Establish County Historic Preservation Commission

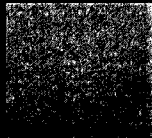
2.2.2.a Establish BRBZ Advisory Commission

5 County shall create a community based body to advocate for...implementation

5.1.1 Create 9-member advisory committee for BRBZ



# HICEN



## Studies

- 2.4.3.b Research trails & historic resources
- 2.4.3.e Collaborative study w/ State, County, Fed
- 3.1.3.j Study impacts from subdivision build-out
- 3.2.3.n Conduct study to identify IAL in Puna
- 4.2.3.a Prepare a County-wide transit Master Plan
- 4.3.2 Prepare an EIS showing least environmental impact for the PMAR
- 4.3.3 Have EIS meet FHWA standars for federal funding

2.4.3.b Research trails & historic resources

2.4.3.e Collaborative study w/ State, County, Fed

3.1.3.j Study impacts from subdivision build-out

3.2.3.n Conduct study to identify IAL in Puna

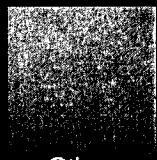
4.2.3.a Prepare a County-wide transit Master Plan

4.3.2 Prepare an EIS showing least environmental impact for the PMAR

4.3.3 Have EIS meet FHWA standars for federal funding



# HICOLA



Other

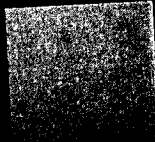
- 3.1.3.h Urge DHHL to conform to PCDDP goals and objectives
- 3.2.2.c Acquire unused agricultural lands to create opportunities
- 3.2.2.k County, State or Private trust to purchase fallow AG land
- 3.2.3.f Provide land and infrastructure for farmers markets
- 3.2.3.m Develop job opportunities in renewable energy except indirect use geothermal (WHY NOT?)
- 3.2.3.o Create fund to purchase IAL(s)
- 3.2.3.q Create Puna AG scholarship for organic farming
- 3.3.3 Develop full service 24 hour medical facility in Puna
- 3.4.1 Free wireless internet district wide
- 3.4.3.c Provide free wireless internet to Puna's Subdivisions

- 3.1.3.h Urge DHHL to conform to PCDDP goals and objectives
- 3.2.2.c Acquire unused agricultural lands to create opportunities
- 3.2.2.k County, State or Private trust to purchase fallow AG land
- 3.2.3.f Provide land and infrastructure for farmers markets
- 3.2.3.m Develop job opportunities in renewable energy except indirect use geothermal (WHY NOT?)
- 3.2.3.o Create fund to purchase IAL(s)
- 3.2.3.q Create Puna AG scholarship for organic farming
- 3.3.3 Develop full service 24 hour medical facility in Puna
- 3.4.1 Free wireless internet district wide
- 3.4.3.c Provide free wireless internet to Puna's Subdivisions
- 3.4.3.f Boost Dept. of Environment budget to promote recycling
- 3.4.3.g Relocate the Kea'au and Pahoia solid waste transfer stations
- 3.4.3.h Increase County resources to remove junk cars
- 3.5.3.c Improve and expand Community Parks
- 3.6 "Unlikely that large-scale expansion of geothermal power within eastern rift zone"
- 3.6.3.e Establish a renewable energy research & development fund with UHH
- 4.1.3.c Enables free internet access to most Puna residents





# HICEL

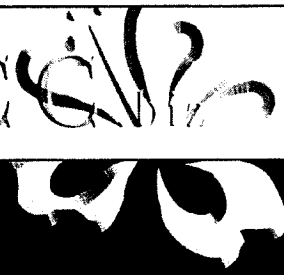


**Other**  
*Continued*

- 3.4.3.f Boost Dept. of Environment budget to promote recycling
- 3.4.3.g Relocate the Kea'au and Pahoa waste transfer stations
- 3.4.3.h Increase County resources to remove junk cars
- 3.5.3.c Improve and expand Community Parks
- 3.6 'Unlikely that large-scale expansion of geothermal power within eastern rift zone'
- 3.6.3.e Establish a renewable energy research & development fund with UHH
- 4.1.3.c Enable free internet access to most Puna residents



# HICC



## ***Research***

- The information in these slides was prepared by HICC's Robert Williams, president '07-08
- This level of detail and what would be required is ABSENT from the Puna CDP
- Cost is also missing. What is the bill for these action items?